

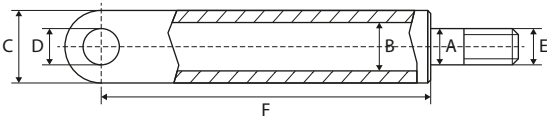


4

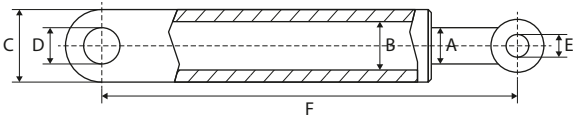
USED FOR
BEHRENS EUROLIFT

TILT CYLINDERS

VÉRIN D'INCLINAISON – SCHLIESSZYLINDER



REF	A	B	C	D	E	F	Info
111TP1949	45 mm	70 mm	82 mm	30 mm	M36 – Ø 45 mm	500 mm	1000/1500/2000 kg



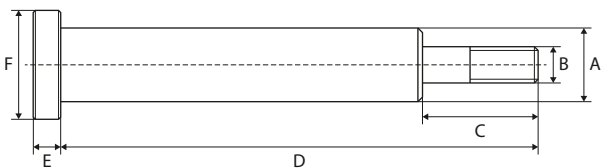
REF	A	B	C	D	E	F	Info
111TP1950	50 mm	55 mm	65 mm	30 mm	30 mm	480 mm	1000/1500/2000 kg
111TP5147	50 mm	55 mm	65 mm	30 mm	30 mm	620 mm	1000/1500/2000 kg

USED FOR BEHRENS EUROLIFT

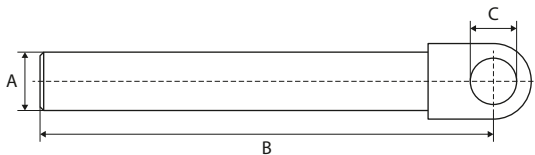
WWW.CROVORG.PL

PISTON RODS

TIGES DE PISTON – KOLBENSTANGEN



REF	A	B	C	D	E	F	Info
111TP1951	45 mm	M36	76 mm	588 mm	10 mm	70 mm	



REF	A	B	C	Info
111TP1952	50 mm	565 mm	30 mm	

SEAL KITS

KITS DE JOINTS – DICHTUNGSSÄTZE



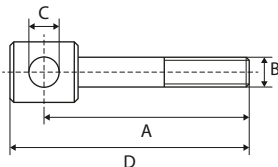
REF	Info
111TP1953	Ø 45/70 mm



REF	Info
111TP1954	Ø 50/60 mm

ROD ENDS

ROTULES – GELENKKÖPFE



REF	A	B	C	D	Info
111TP1955	125 mm	M36	30 mm	155 mm	
111TP1956	305 mm	M36	30 mm	336 mm	

TANKS & OIL RESERVOIRS
RÉSERVOIRS (D'HUILE) – TANKS & ÖLBEHÄLTER



REF	Info
111TP1957	6,8 liter – Ø 110 mm

HYDRAULIC PUMPS

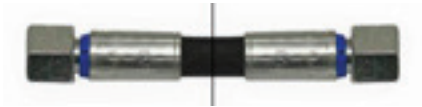
POMPES HYDRAULIQUES – HYDRAULIKPUMPEN



REF	CC	Rotation	Info
<u>111TP1958</u>	1,7 cc	<< CCW	MD-TYP

REF	CC	Rotation	Info
<u>111TP1959</u>	1 cc	CW >>	

HOSES
TUYAUX – SCHLÄUCHE



REF	Hose Ø	Hose Ø	Length	Fitting 1	Fitting 2	Info
111TP1960	1/4"	6,4 mm	630 mm	M16 x 1,5 mm	M16 x 1,5 mm	-40–100 °C

VALVE BLOCKS

BOÎTIERS À SOUPAPES – STEUERBLÖCKE

REF	Info
<u>111TP1961</u>	12 V
<u>111TP1962</u>	24 V



USED FOR BEHRENS EUROLIFT

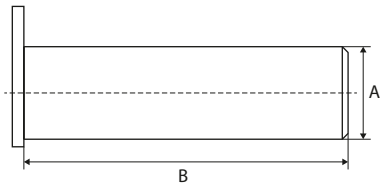
WWW.CROVORG.PL

PINS, BUSHINGS & ROLLERSPINS, BUSHINGS & ROLLERS - AXES, BAGUES & GALETS - ACHSEN, BUCHSEN & ROLLEN

PINS

AXES - ACHSEN

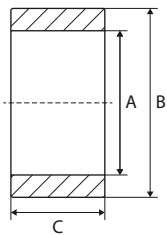
REF	A	B	Info
111TP1963	30 mm	80 mm	M8 x 1 mm
111TP1964	30 mm	113 mm	M8 x 1 mm
111TP1965	30 mm	128 mm	M8 x 1 mm
111TP1967	30 mm	153 mm	M8 x 1 mm
111TP1966	40 mm	65 mm	M8 x 1 mm



PLATFORM ROLLERS

GALETS DE TRANSPALETTE - PLATTFORMROLLEN

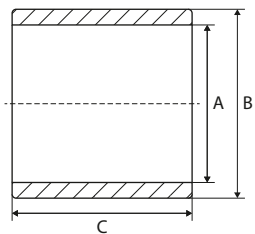
REF	A	B	C
111TP1968	30 mm	90 mm	45 mm



BUSHINGS

BAGUES - BUCHSEN

REF	A	B	C	Info
111TP1969	30 mm	34 mm	30 mm	DX
111TP1970	40 mm	44 mm	30 mm	DX



USED FOR BEHRENS EUROLIFT

WWW.CROVORG.PL

SCREWS, NUTS & RINGS

VIS, ÉCROUS & RONDELLES – SCHRAUBEN, MUTTERN & RINGE



REF	Info
<u>111TP1345</u>	M8 x 12 mm
<u>111TP1264</u>	M8 x 16 mm
<u>111TP1265</u>	M10 x 18 mm



REF	Info
<u>111TP1266</u>	M12 x 50 mm
<u>111TP1267</u>	M16 x 30 mm
<u>111TP1268</u>	M16 x 40 mm
<u>111TP1269</u>	M16 x 80 mm



REF	Info
<u>111TP1270</u>	M8 x 75 mm
<u>111TP1271</u>	M10 x 75 mm
<u>111TP1344</u>	M14 x 150 mm
<u>111TP1272</u>	M14 x 180 mm
<u>111TP1273</u>	M14 x 230 mm
<u>111TP1274</u>	M16 x 75 mm
<u>111TP1275</u>	M16 x 150 mm
<u>111TP1276</u>	M16 x 155 mm



REF	Info
<u>111TP1277</u>	M6 x 80 mm
<u>111TP1278</u>	M8 x 30 mm
<u>111TP1279</u>	M8 x 60 mm
<u>111TP1280</u>	M16 x 45 mm
<u>111TP1281</u>	M20 x 50 mm



REF	Info
<u>111TP1282</u>	M8 x 12 mm
<u>111TP1283</u>	M10 x 20 mm



REF	Info
<u>111TP1284</u>	M6 x 12 mm
<u>111TP1285</u>	M6 x 16 mm
<u>111TP1286</u>	M12 x 30 mm

USED FOR BEHRENS EUROLIFT

WWW.CROVORG.PL

MECHANICAL PARTS – PIÈCES MÉCANIQUES – MECHANISCHE ERSTATZTEILE

SCREWS, NUTS & RINGS

VIS, ÉCROUS & RONDELLES – SCHRAUBEN, MUTTERN & RINGE



REF	Info
<u>111TP1287</u>	M8 x 20 mm
<u>111TP1288</u>	M8 x 25 mm
<u>111TP1289</u>	M8 x 30 mm
<u>111TP1290</u>	M12 x 25 mm
<u>111TP1291</u>	M12 x 45 mm



REF	Info
<u>111TP1306</u>	M6 x 45 mm
<u>111TP1342</u>	M8 x 80 mm
<u>111TP1307</u>	M8 x 90 mm
<u>111TP1308</u>	M10 x 80 mm



REF	Info
<u>111TP1292</u>	M3
<u>111TP1293</u>	M5
<u>111TP1294</u>	M6
<u>111TP1295</u>	M8
<u>111TP1296</u>	M10
<u>111TP1297</u>	M12
<u>111TP1298</u>	M14
<u>111TP1299</u>	M16
<u>111TP1300</u>	M20



REF	Info
<u>111TP1309</u>	Ø 25 mm
<u>111TP1310</u>	Ø 28 mm
<u>111TP1311</u>	Ø 30 mm
<u>111TP1312</u>	Ø 35 mm
<u>111TP1314</u>	Ø 39 mm
<u>111TP1313</u>	Ø 40 mm



REF	Info
<u>111TP1301</u>	Ø 6 mm
<u>111TP1302</u>	Ø 8 mm
<u>111TP1303</u>	Ø 24 mm



REF	Info
<u>111TP1315</u>	M6
<u>111TP1316</u>	M8
<u>111TP1343</u>	M16

SCREWS, NUTS & RINGS

VIS, ÉCROUS & RONDELLES – SCHRAUBEN, MUTTERN & RINGE



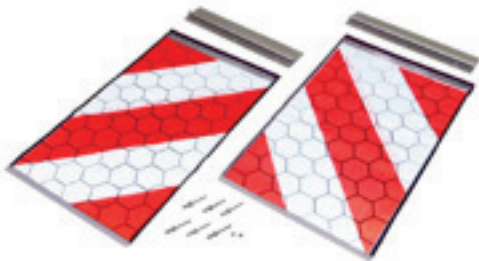
REF	Info
<u>111TP1304</u>	Ø 6 x 16 mm
<u>111TP1305</u>	Ø 8 x 60 mm

PLATFORM PARTS

PIÈCES DE PLATEFORME – PLATTFORMERSATZTEILE



REF	Info
<u>111TP1971</u>	§ 53b Abs. 5 StVZO TÜV/CE with certificate – 250 x 400 mm



REF	Info
<u>111TP1320</u>	§ 53b Abs. 5 StVZO TÜV/CE without certificate – 250 x 400 mm

FOOT CONTROLLERS & PARTS

COMMANDES AU PIED & ACCESSOIRES – FUSSSCHALTER & ERSATZTEILE



REF	Info
111TP1972	Ø 30 mm



REF	Info
111TP1973	Ø 30 mm



REF	Info
111TP1974	Ø 40 mm



REF	Info
111TP1975	Ø 40 mm

CONTACT ELEMENTS

BLOCS DE CONTACT – KONTAKTELEMENTE



REF	Info
111TP1976	1 x NO

SENSORS & SWITCHES

CAPTEURS & INTERRUPTEURS – SENSOREN & SCHALTER



REF	Info
111TP1977	Ø 18 x 100 mm – 12–24 V



REF	Info
111TP1978	Ø 25 x 100 mm – 12–24 V

USED FOR BEHRENS EUROLIFT

WWW.CROVORG.PL

FLASHLIGHTS & PARTS

LAMPES TORCHES & ACCESSOIRES – BLINKLEUCHTEN & ERSATZTEILE



REF	Info
<u>111TP1503</u>	20° – IP68



REF	Info
<u>111TP1504</u>	Used for REF <u>111TP1503</u>

CIRCUIT BOARDS/CONTROLLERS

CIRCUITS IMPRIMÉS/COMMANDES – LEITERPLATTEN/BEDIENUNGEN



REF	Info
<u>111TP1979</u>	24 V

CIRCUIT BOARDS/CONTROLLERS

CIRCUITS IMPRIMÉS/COMMANDES – LEITERPLATTEN/BEDIENUNGEN



REF	Info
<u>111TP1980</u>	175 A – DIN 72581/5
<u>111TP1981</u>	200 A – DIN 72581/5



REF	Info
<u>111TP1982</u>	175 A – DIN 43560/1
<u>111TP1983</u>	225 A – DIN 43560/1

FUSE HOLDERS & PARTS

PORTE-FUSIBLES & ACCESSOIRES – SICHERUNGSHALTER & ERSATZTEILE



REF	Info
<u>111TP1984</u>	M8

ELECTRICAL PARTS – PIÈCES ÉLECTRIQUES – ELEKTRISCHE ERSATZTEILE

USED FOR BEHRENS EUROLIFT

WWW.CROVORG.PL

NOTES – NOTIZ

Area with horizontal dotted lines for notes.